



# LEADING ORGANISATIONS

## PROFESSIONAL DIPLOMA

European International University-Paris



READ MORE



# LEADING ORGANISATIONS

*Advanced Certification Programme*

A comprehensive look at best practices in both leadership and people management, 'Leading Organisations' is a Professional Certificate by European International University-Paris (EIU-Paris). Taken from the EIU-Paris MBA programme, this online offering is provided in 32 sections and involves approximately 25 hours of learning. Leads to Leadership Certification

This program also offers opportunity for managers to acquire expert insights, explore leadership concepts, and examine actionable strategies for building the kind of leadership to enable a business, organisation and employees to deliver their optimum performance. This Essentials Leadership programme also aims to provide participants with the ideas, frameworks, and tools required in creating an environment and culture in which individuals feel compelled to innovate and contribute to a transforming work environment.

Curriculum Content developed by Industry Experts under the leadership of Professor Dr. Joel Farnworth - Dean of Management Business School European International University-Paris

Pedagog-Ripe time for blockchain education

**Forbes**

**“An investment in knowledge pays the best interest”  
Benjamin Franklin**



**ADVANCED SOLUTIONS  
TECHNICAL INSTITUTE**  
Fostering science and technology

PEDAGOG.AC

## What I will learn?

- The fundamental start point is that Leadership is different from Management and, although almost all agree to this, research continues to show that businesses and organizations are struggling to identify and use these differences effectively. Business results are suffering as a result.
- Much has been learned in recent years as to how to drive business growth, align and engage a workforce and the leadership capabilities needed to deliver this growth, alignment and engagement, over time. This course updates us on this learning, ensures we are working from experience and best practice and that we avoid the fad and the trend to focus on the fundamentals that matter.
- Designed over a six-month period this course brings together much that we have learned on impactful leadership as opposed to effective management.
- Within Leadership; create and implement strategy, define and embed vision, mission and values, create an engaged workforce, determine key leadership capabilities and lead change.

For more information mail [hello@pedagog.ac](mailto:hello@pedagog.ac)

## Who this course is for:

Target/Suitable attendees for this programme are Business Leaders and Managers (and/or HR professionals) wishing to increase their understanding and capability in leadership best practice. This programme is suitable for corporates and executives in managerial capacity to expand their leadership skills for further growth in their careers

This course is also recommended for professionals willing to advance their career prospects and even freshers who are looking to start their careers as Business Leaders.

## Requirements

- This course is delivered in English Language.
- You have to submit the assignment upon completion of the course.



European  
Council for  
Business  
Education



ATHEA  
AFFILIATED INSTITUTION



For queries or training in bulk contact  
[hello@pedagog.ac](mailto:hello@pedagog.ac)

## LESSONS COVERED:

- Introduction to Leading Organisation
- Leadership Capabilities
- Creating and Articulating Strategy
- Aligning the Workforce (Performance Management)
- Engaging a Workforce
- Mental Capacity (Cognitive)
- Mental Capacity (Creative)
- Influencing
- Driving and Facilitating Change
- Demands of the Led
- DEMANDS OF THE LED – COVID 19 IMPLICATIONS AND RESPONSES
- DotL - Leadership/Management Style
- DotL - Learning and Development
- DotL - Career Opportunities
- DotL - Rewards
- DotL - Brand (Vision, Mission and Values)
- DotL - Brand (Diversity)
- DotL - Brand (Formal and Informal)
- DotL - Additional
- Management, Origins of Best Practice
- Impactive People Management Today
- Management Capabilities
- Management and Organisational Structures
- Management and HR Connections
- Value and Use of HRBPs to Managers
- Talent Management (Resourcing/Recruitment)
- Talent Management (Potential)
- Talent Management (Development)
- Manager as Coach
- Leader/Manager as Mentor
- Impactive Leader/Manager of Tomorrow
- L& PM Summary





## Course Structure

The programme is structured into 32 units which have further been arranged into “bite-size” lessons for longer retention and convenient application – which is the desired outcome of true education. Each lesson includes reading requirement and a video.

## Sample Certificate

THE DUAL CERTIFICATE awarded by European International University, Paris & by Pedagog



### Assessment/Reinforcement

This is a Premium Coaching Course; hence the type of assessment is designed not to penalise you for getting anything wrong but to reinforce the principles from each Lesson. This is positive reinforcement and the basis of Academic Coaching. This assessment is based on the premise: What's worth remembering is worth repeating. No real teaching takes place until learning has taken place.

### Duration

Maximum duration of the course is six-months. However, this customized course can easily be successfully completed at your own pace and in your own space, even within a few weeks.

### Course Fee

The Course fee can be checked on <https://pedagog.ac/asti> which includes a certification from European International University, Paris including its Alumni Status after the achievement along with the certification from Pedagog.ac United Kingdom.



Watch video 



# LEADING ORGANISATIONS

European International University-Paris



1

---

## Sign up at Pedagog.ac

Verify your email and sign in

2

---

## Find Leading Organisations



3

---

## Add to cart

Select "Add to cart" & click buy

Pay with card or paypal

4

---

## Go to the courses tab after logging

Once you have purchased, you will see the course in your dashboard to start studying

5

---

## Completion

On completion, you will receive certification from Pedagog and European International University-Paris by email.

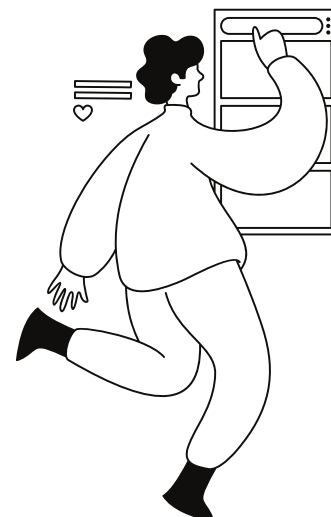
For Hardcopies students can contact [hello@pedagog.ac](mailto:hello@pedagog.ac)



# Communication

For any queries related to courses, admissions, scholarships, or technical related queries please contact **hello@pedagog.ac** The team usually resolves all the queries within 24-48 hours.

For training this course in bulk please contact **info@pedagog.ac**



## Pedagog - Blockchain based innovative learning platform

---



### Contact numbers for Advanced Solutions Technical Institute:

Dr. Ancil Peters

Executive Director

Advanced Solutions Technical Institute

T: (868) 610-7500 | M: (868) 485-1835

E: ancil@astitnt.com, education@astitnt.com

www.astitnt.com

#46 Boundary Road, San Juan, Trinidad & Tobago.

In Collaboration With

EUROPEAN INTERNATIONAL UNIVERSITY-Paris

59 Rue Lamarck, 75018 Paris, France

www.eiu.ac | www.pedagog.ac



ACCREDITATION SERVICE  
FOR  
INTERNATIONAL SCHOOLS,  
COLLEGES & UNIVERSITIES



ATHEA  
ASSOCIATION FOR TRANSNATIONAL  
HIGHER EDUCATION ACCREDITATION

